



FabGennix Inc.
INTERNATIONAL

New Item New Item

Customer Service: 1-800 786 1236
Technical Service: 214 387 8105
Fax: 214 387 0870
Info@fabgennix.com
www.fabgennix.com

Anti-Sec 23 Antibodies

Anti-Sec23 Antibodies (Sec23-100P and Sec23-101AP)

The regulation of intracellular vesicular trafficking is mediated by specific families of proteins that are involved in vesicular budding, translocation, and fusion with target membranes. The protein trafficking between endoplasmic reticulum (ER) and Golgi apparatus is mediated by two distinct membrane coat complexes, COPI and COPII (1). Two Coat protein II (COPII) proteins are necessary to generate secretory vesicles at the endoplasmic reticulum. COPI consist of 7 protein subunits including α , β , $\beta 1$, δ , ϵ , δ , ζ . COPI is also responsible for the retrograde golgi to ER transport of dilysine-tagged proteins (2). Sec23A is a functional human counterpart of the yeast COPII component Sec23p which suggests that it plays similar role in the mammalian protein export from ER. Both Sec 23 isoforms (Sec23A and Sec23B) have similar molecular weight 85 kDa and are co-expressed in many human tissues at varying levels of expression. In yeast, the Sec24p protein is the only COPII component in which two close orthologues have been identified. Sec-23p is a component of coat protein II (COPII) coated vesicles involved in protein export from the endoplasmic reticulum (Mizoguchi et. al., 2000). The COPII is required for the vesicle budding from the endoplasmic reticulum and is consist of two heterodimeric subcomplexes, Sec23p/Sec24p and Sec13p/Sec31p and a small GTPase Ser1p (Higashio et al., 2000). Recent data also suggest that Sec23p/Sec24p complexes are in addition to its role in the shaping up of the vesicle, the Sec23-24p complex may be implicated in cargo selection and trafficking of the amount of cargo within the cells. Two Sec23p antibodies were generated in rabbits against synthetic peptides from the unique sequence to Sec23 protein.

FabGennix, Inc., will also provide Western blot positive controls for human Sec23 in ready-to-use buffer for easy identification of Sec23 protein in samples. Limited quantity of antigenic peptide is also available. Please enquire for their availability before ordering.

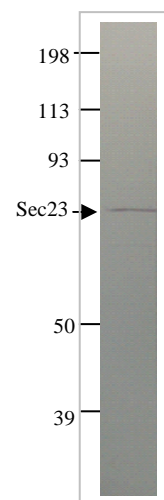
Catalog #	Host Species	Nature	Cross reactivity	Quantity	price
Sec23-100P	Rabbit	Polyclonal antisera	Human	100 μ l	195
Sec23-101AP	Rabbit	Affinity purified IgG	Human	100 μ g	225
P-Sec23	n/a	Antigenic peptide	peptide	500 μ g	85

R = rat; M = mouse; H = human; C = chicken; monk = monkey ; * not all variants are labeled equally

Immunogen: Synthetic peptide corresponding to Sec23 protein.
Concentration: Sec23-100P Neat serum (enquire)
 Sec23-101AP AP IgG concentration 1-1.25 mg/ml in 50% antibody stabilization buffer.
Applications: Antibody Sec23-100P, Sec-101AP is ideal for WB and IMM. The IHC and CF microscopic examination has not been established. The antibody does immunoprecipitates solubilized Sec23 protein from Jurkat cell extracts. The dilutions for this antibody is for reference only. WB > 1:500; IMM & i.p pull-down assays:> 1:350
Reactivity: This antibody detects a single 89 kDa Sec23p protein in Jurkat cell extracts. The antibody does not cross react with other proteins.
Protocols: Standard protocol for various applications (WB, IMM & IHC) of this antibody is provided with the product specification sheet, however, FabGennix Inc. strongly recommends investigators to optimize conditions for use of this antibody in their laboratories.
Form/Storage: The antiserum is supplied in antibody stabilization buffer with preservatives. The affinity-purified antibodies are isolated on antigen-sepharose affinity column and supplied as 1-1.25 mg/ml IgG in antibody stabilization buffer. For long-term storage of antibodies, store at -20°C. FabGennix Inc. does not recommend storage of very dilute antibody solutions unless they are prepared in specially formulated multi use antibody dilution buffer (Cat # DiluOBuffer). Working solutions of antibodies in DiluOBuffer should be filtered through 0.45 μ filter after use for long-term storage.

References:

- Weidler, M., Reinhard C., Friedrich G., et. Al., Biochem. Biophys. Res. Comm. 271, 401-408, 2000.
- Botelho R. J., Hackam D. J., et. Al., J. Biol. Chem. 275, 10655-10660, 2000.
- Mizoguchi T, Nakajima K, Hatsuzawa K, Nagahama M, Hauri HP, Tagaya M, Tani K. BBR Comm. 279, 144-149, 2000.



* For users who may require large amounts of Sec23-100P or Sec23-101AP, please enquire about bulk material discounts.
 This Product is for Research Use Only and is NOT intended for use in humans or clinical diagnosis.

061802-0020SF1001Z-rev10.01

FabGennix Inc.
INTERNATIONAL

5850 Town and Country Blvd. Suite 301. Frisco, TX 75034
 Customer service: 1800 786 1236; Technical Support: 214 387 8105